



South Bay Salt Pond Restoration Project

Restoring the Wild Heart of the South Bay



April 2008



September 2009



May 2010



October 2010

SALT POND A21 SOUTH BAY SALT POND RESTORATION PROJECT

Kite aerial photographs of a small channel in the northeast corner following the 2006 breach to tidal flow. Field of view is ~ 120 feet. . C. Benton

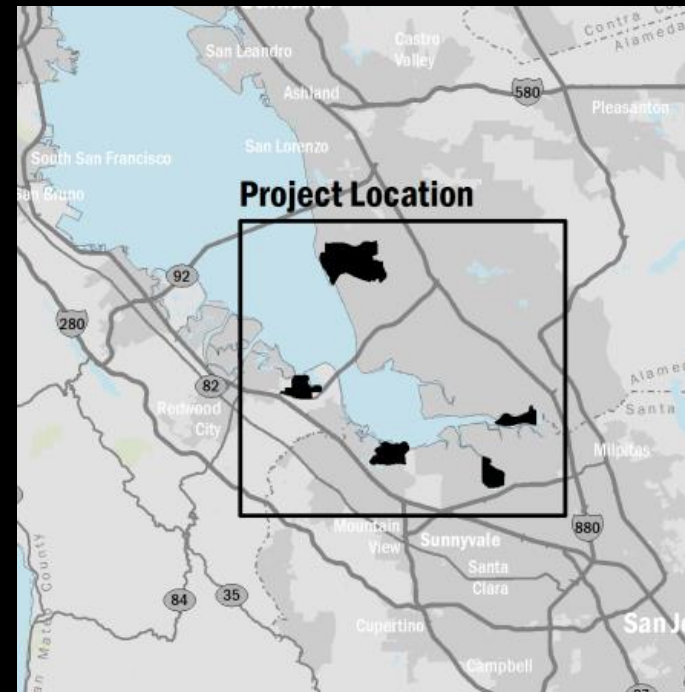
CCCR Meeting, June 24, 2021
Dave Halsing, Executive Project Manager
Donna Ball, Project Lead Scientist

Today's Topics

- **Introductions**
- **Phase 2 Implementation**
- **Beneficial Material Reuse**
- **Permitting Policy Changes**
- **Outside Project Collaboration**
- **Outreach & Engagement**
- **Science Program, Planning, Funding**
- **Discussion / Q & A**

Phase 2 Project Areas

- **Refuge – 4 locations**
 - **Alviso - Island Ponds**
 - **Alviso - A8 Ponds**
 - **Alviso – Mtn View Ponds**
 - **Ravenswood Ponds**
- **Eden Landing**
 - **Entire southern half**





South Bay Salt Pond Restoration Project

Restoring the Wild Heart of the South Bay

2002 Salt Pond Acquisition Area

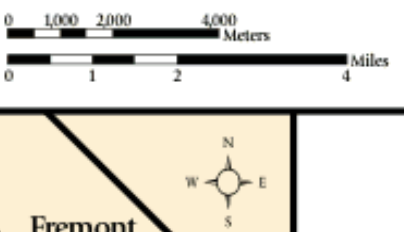
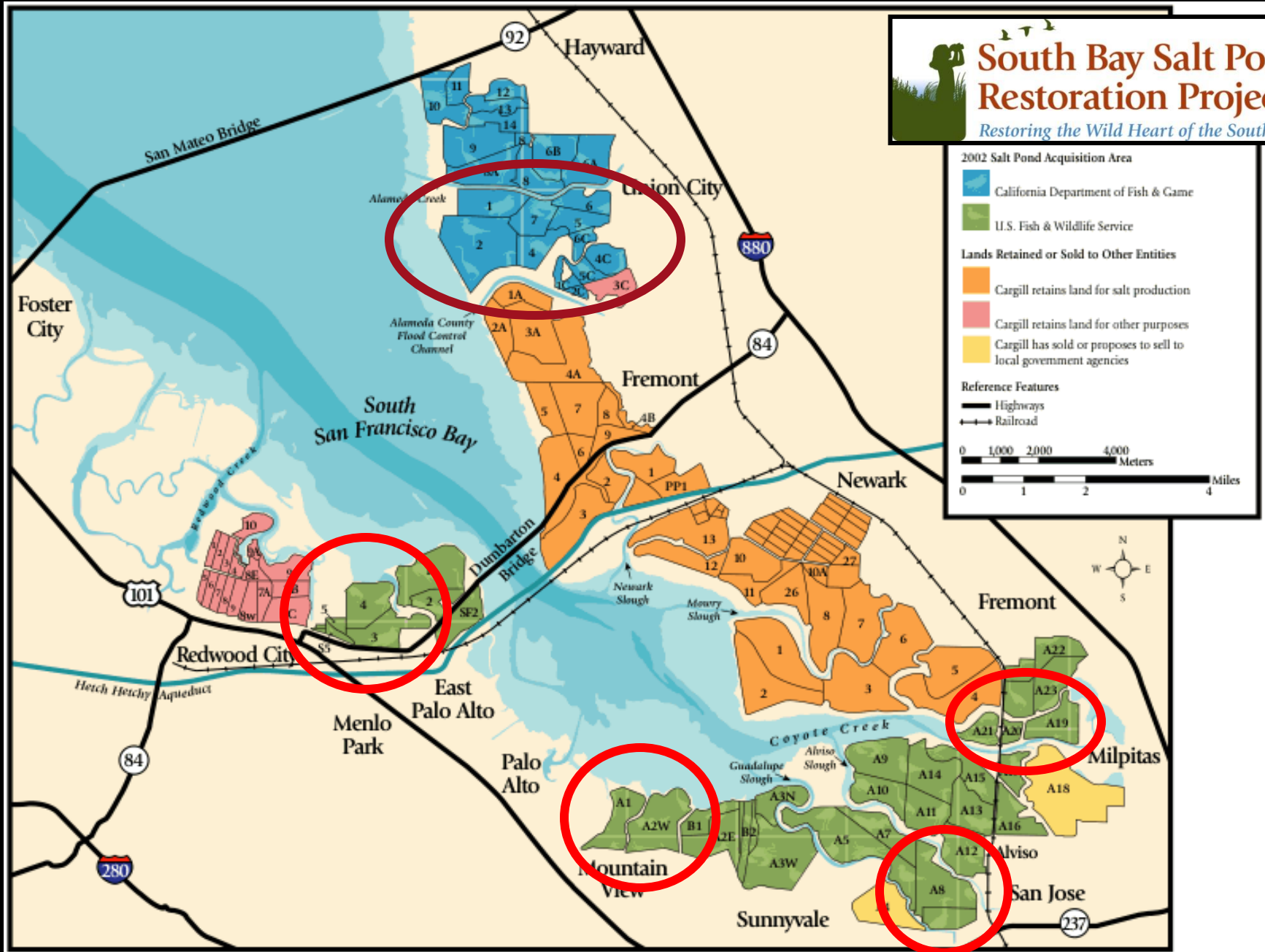
- California Department of Fish & Game
- U.S. Fish & Wildlife Service

Lands Retained or Sold to Other Entities

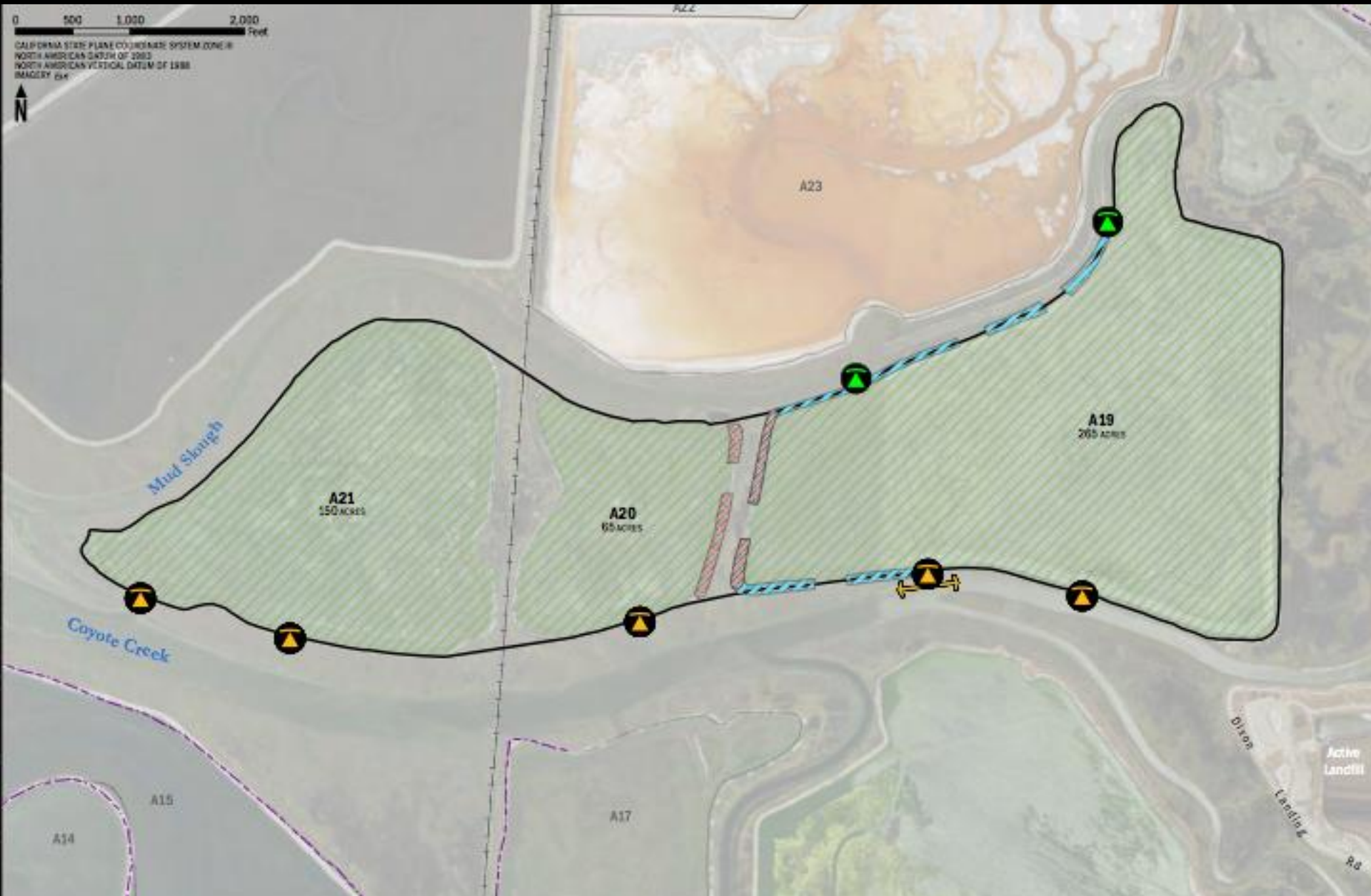
- Cargill retains land for salt production
- Cargill retains land for other purposes
- Cargill has sold or proposes to sell to local government agencies

Reference Features

- Highways
- Railroad

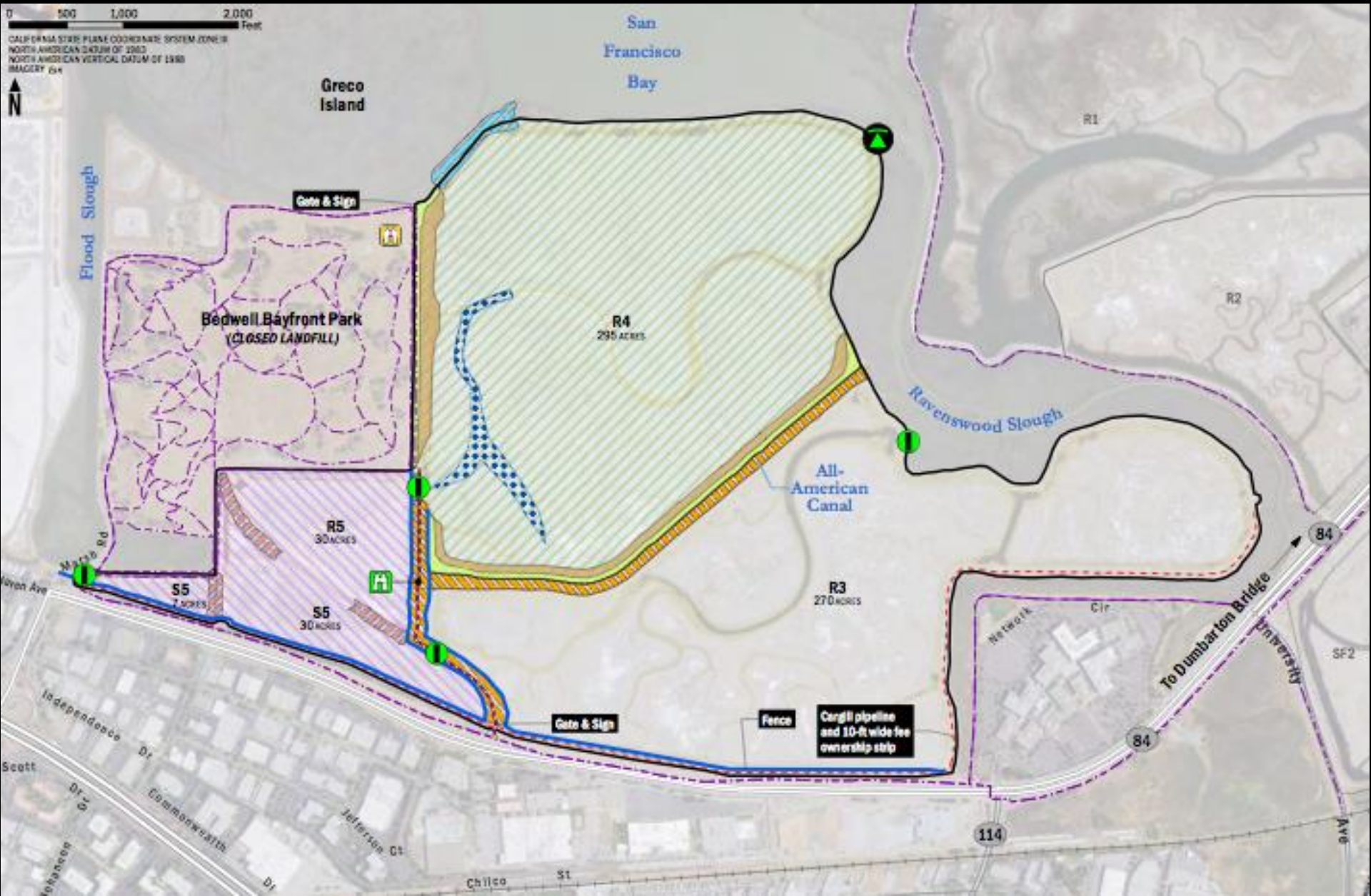
Island Ponds – Aug/Sept



A8 Ponds – Ongoing



Ravenswood – Underway



Phase 2 at Ravenswood

- Imported over 125,000 cubic yards**
- Much Phase 2 earthwork completed**
- Easement agreements w/ City of Menlo Park and Cargill**
- Bayfront Canal & Atherton Channel Project coordination – underway now**

Phase 2 at Ravenswood

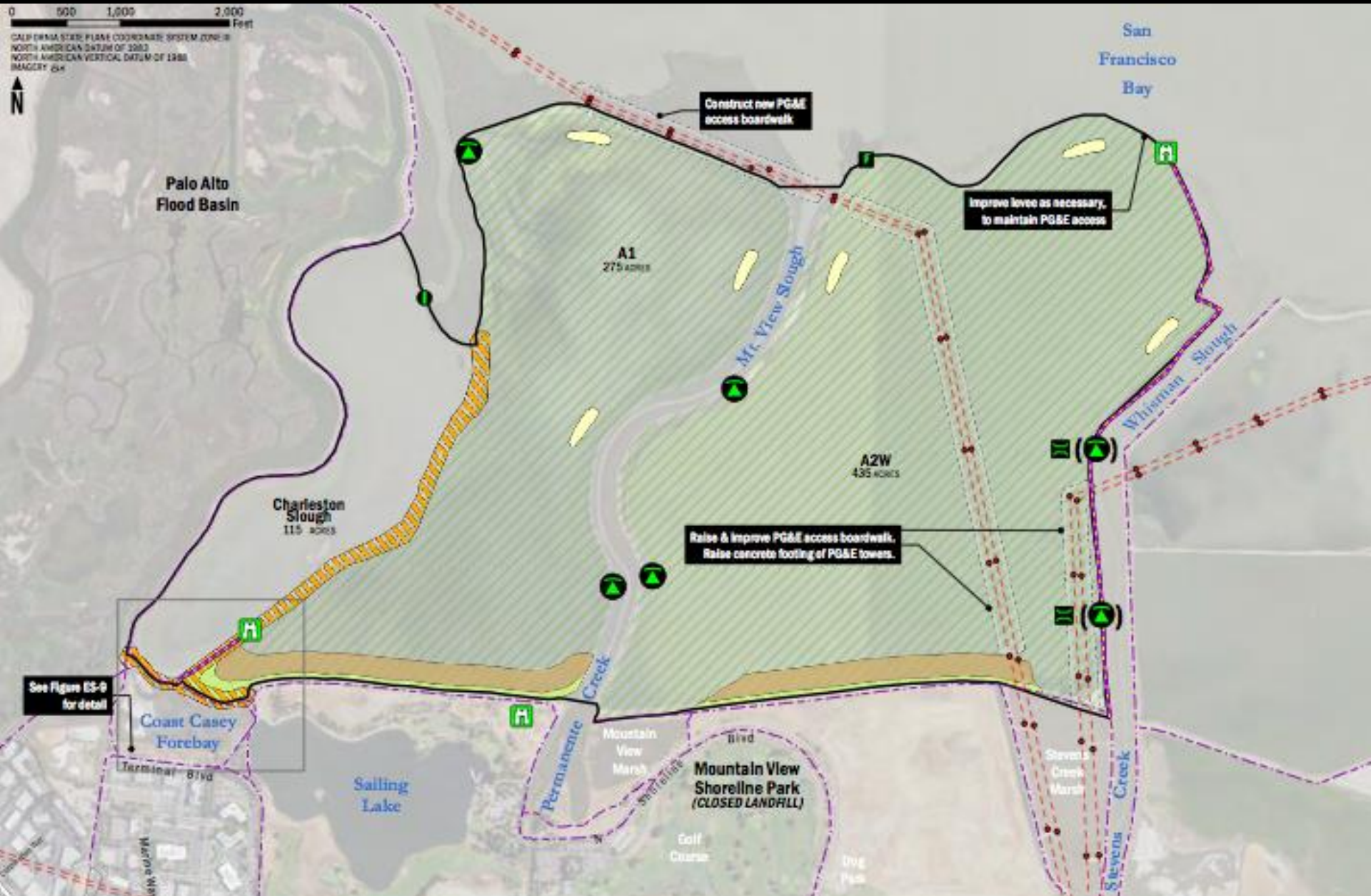
- **2021**

- **Install all 4 water control structures**
- **More import and earthwork**
- **Planting (w/ Save the Bay) ecotone**
- **Start operating R5/S5 Ponds w/ BCAC**

- **2022**

- **Complete earthwork for ecotones**
- **Trail and public access features**
- **Excavate tidal channels**
- **Breach!**

Mtn View Ponds



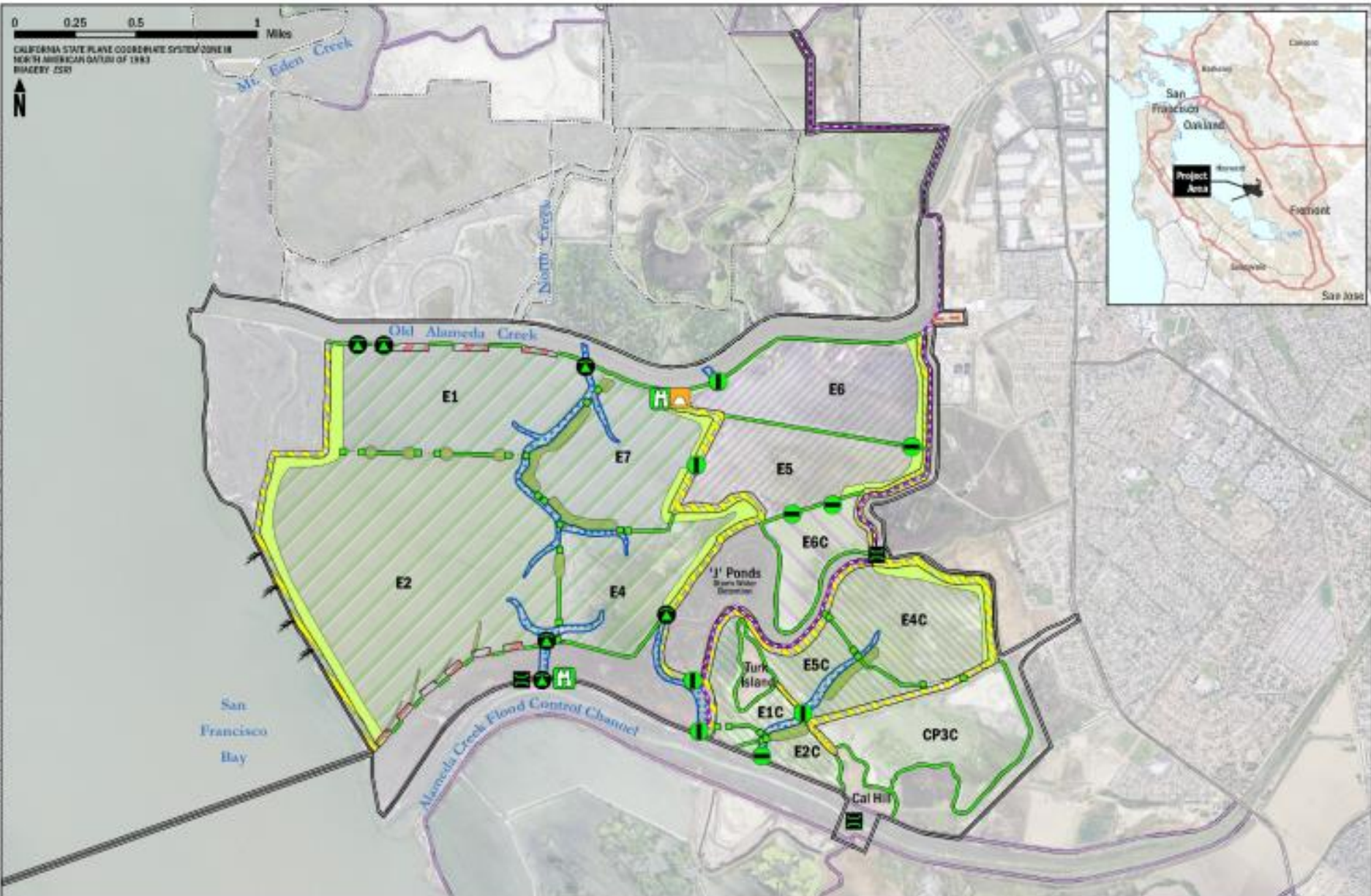
Phase 2 at Mountain View

- **Addressed City concerns:**
 - **Geotech, hydrodynamics, traffic**
 - **Basis of design reports**
- **Pond A2W first; Pond A1 to follow**
- **Updated 65% plans; now at 90%**
- **Easement agreements drafted**
- **2021 → Building access ramp**
- **Full import and construction → 2022**

Phase 2 at Eden Landing



Phase 2 at Eden Landing



Phase 2 at Eden Landing

- **2,200 acres total**
 - **1,400 acres tidal marsh**
 - **800 acres enhanced ponds & muted tidal**
- **Enhancing 3 rows of berms**
- **Bay Trail spine thru Eden Landing**
- **Includes gravel beach pilot project**
- **No dredge material reuse**
- **Separating into two 'stages'**

Stage A of Phase 2



Proposed Design - South Bay Salt Pond Restoration Project, Edén Landing Phase 2

Project Location: Alameda County

Aerial Imagery: NAIP 2018 Aerial Imagery

CALIFORNIA STATE PLANE COORDINATE SYSTEM ZONE III
NORTH AMERICAN DATUM OF 1983



0 0.25 0.5 1 Miles

Phase 2 at Eden Landing

- **Design & permitting underway**
 - **60% designs almost done**
 - **Project desc'n drafted**
 - **Met and toured site with BRRIT**
- **Alameda Flood Control District**
 - **Prop 68 grant for modeling, design, and joint project work**
- **Easements w/ Cargill for levee work**

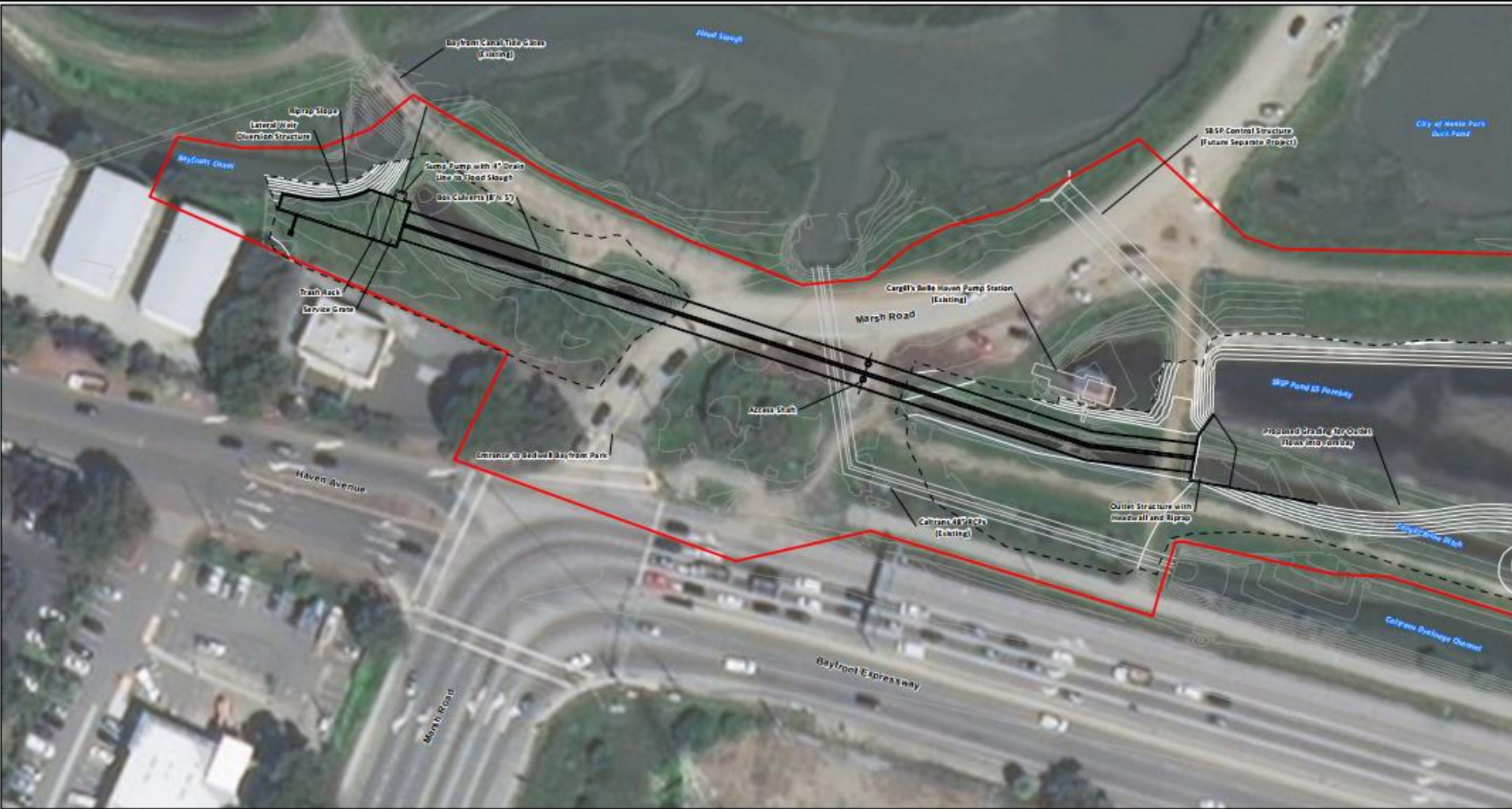
Related Updates

- **Modifying QAPP to allow more beneficial reuse of upland material**
- **Expanding material provider market**
- **Outside projects and fundraising**
 - **A8 – Creeks connections w/ Valley Water**
 - **Bayfront Canal & Atherton Channel**
 - **South Bay Shoreline**

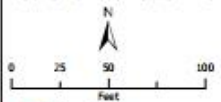
A8 – Calabazas/STA Creeks Project



Bayfront Canal & Atherton Channel



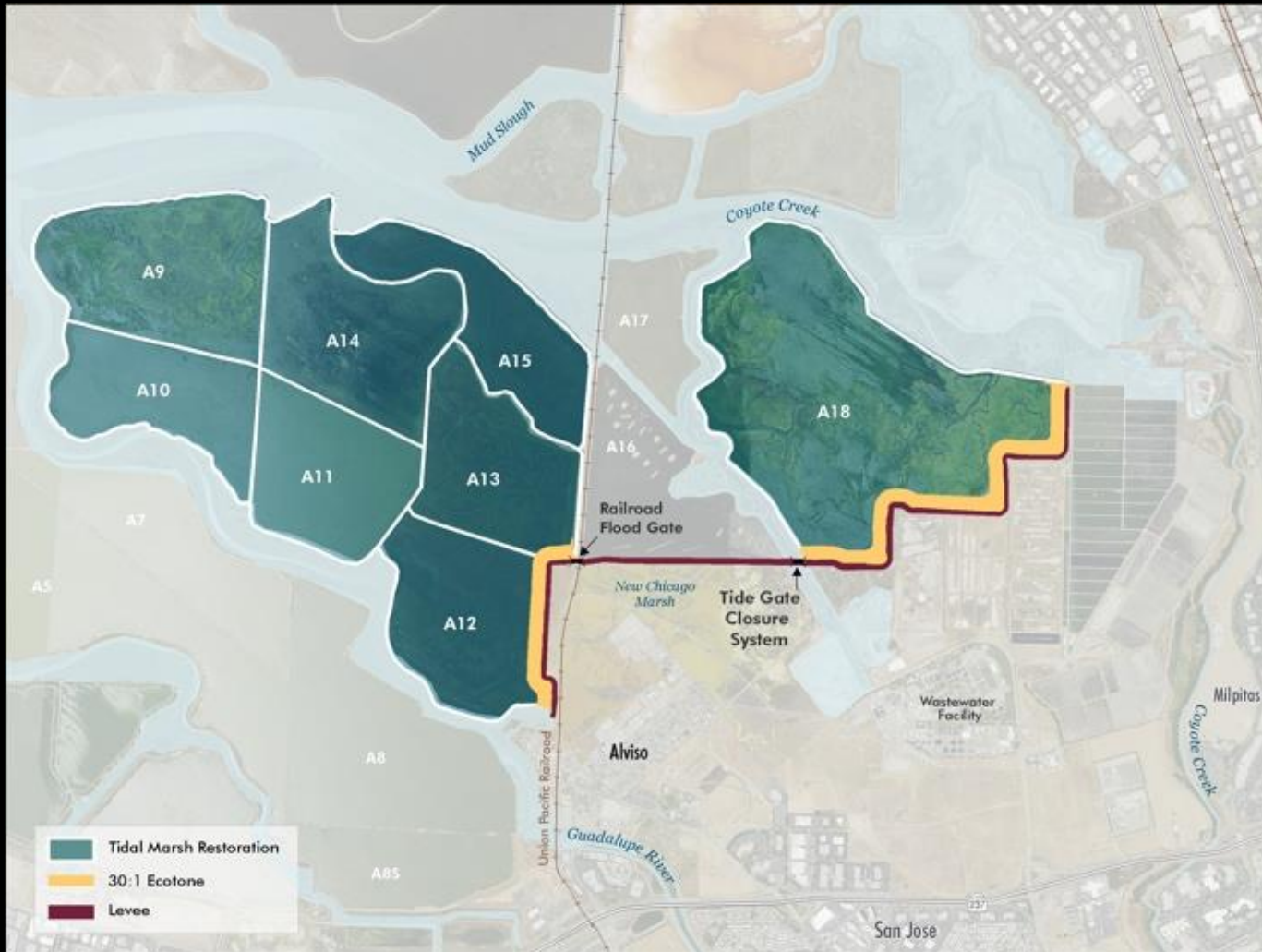
Source: Sources: Sources: 314, DigitalGlobe, GeoEye, Earthstar, GeoEye, CNES/Airbus DS, USDA, USGS, AeroGRID, IGN, and the GIS



- Project Limits
- Proposed Project Structures
- Limits of Grading

Figure 4
Conceptual Site Plan - Bypass Culverts

Shoreline Project



Reaches 1-3 out to bid now

Outreach

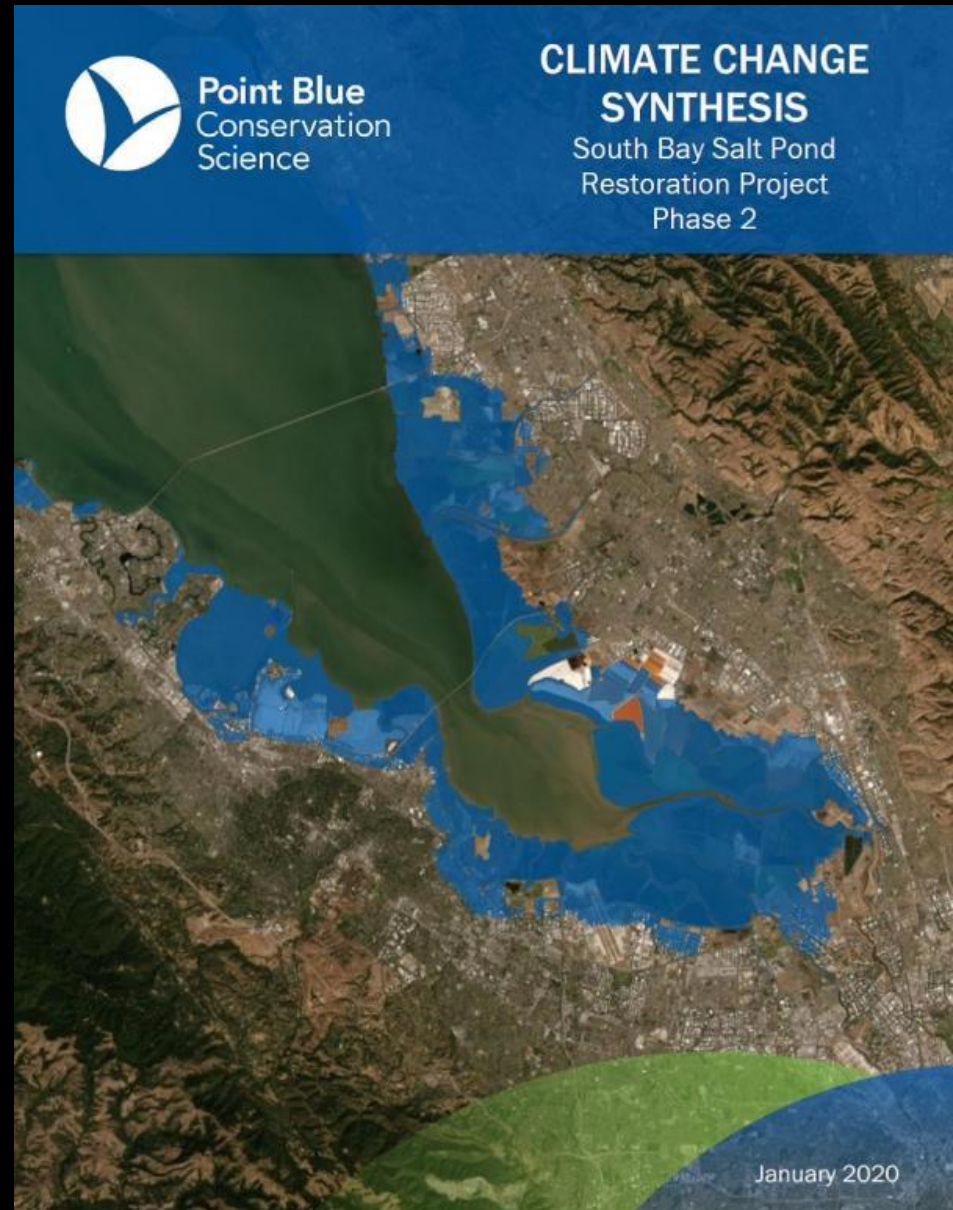
- **BCDC's Social Equity and Environmental Justice Policy**
 - **More outreach for permitting @ Eden**
 - **May do more at Ravenswood too**
- **Stakeholder Forum meeting November 3**
- **Salty Dave's Wetland Weblog**

Science updates

- **Climate and Science Syntheses**
→ Framework → Plan
- **Status of Science Symposium**
- **Regional Collaboration**

Stop and Assess

- Phase 2 Science Synthesis
 - New/emerging technologies
 - Opportunities for collaboration
- Climate Synthesis

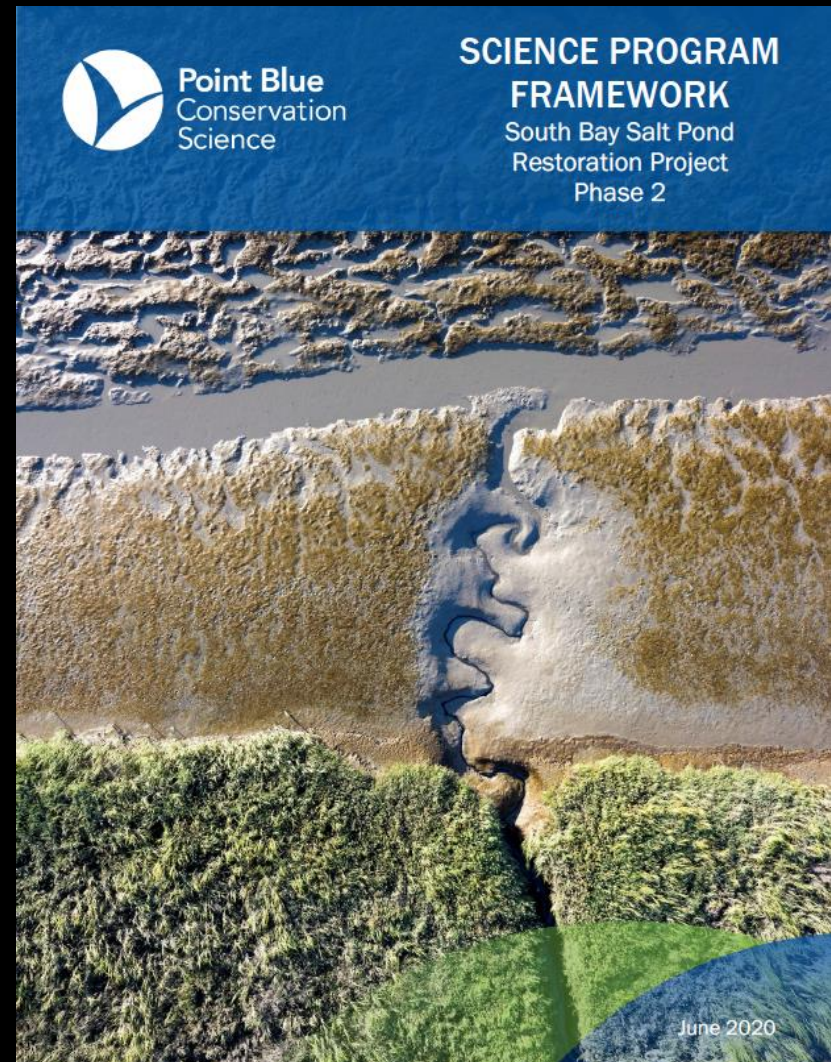


Phase 2 Science

Incorporate Phase
1 Science and
Climate Synthesis

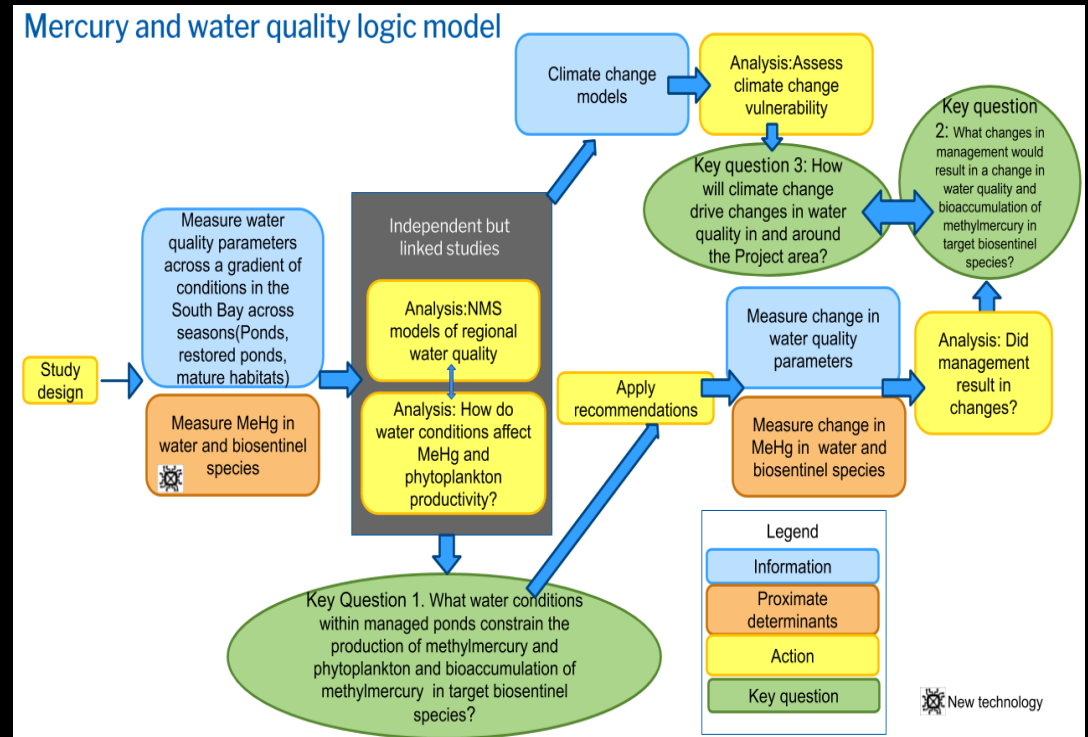
Regional Science
and Collaboration

Adaptation and
Resilience



Case Studies

- Mercury/Water Quality
- Snowy Plovers
- Breeding Waterbirds
- Sediment

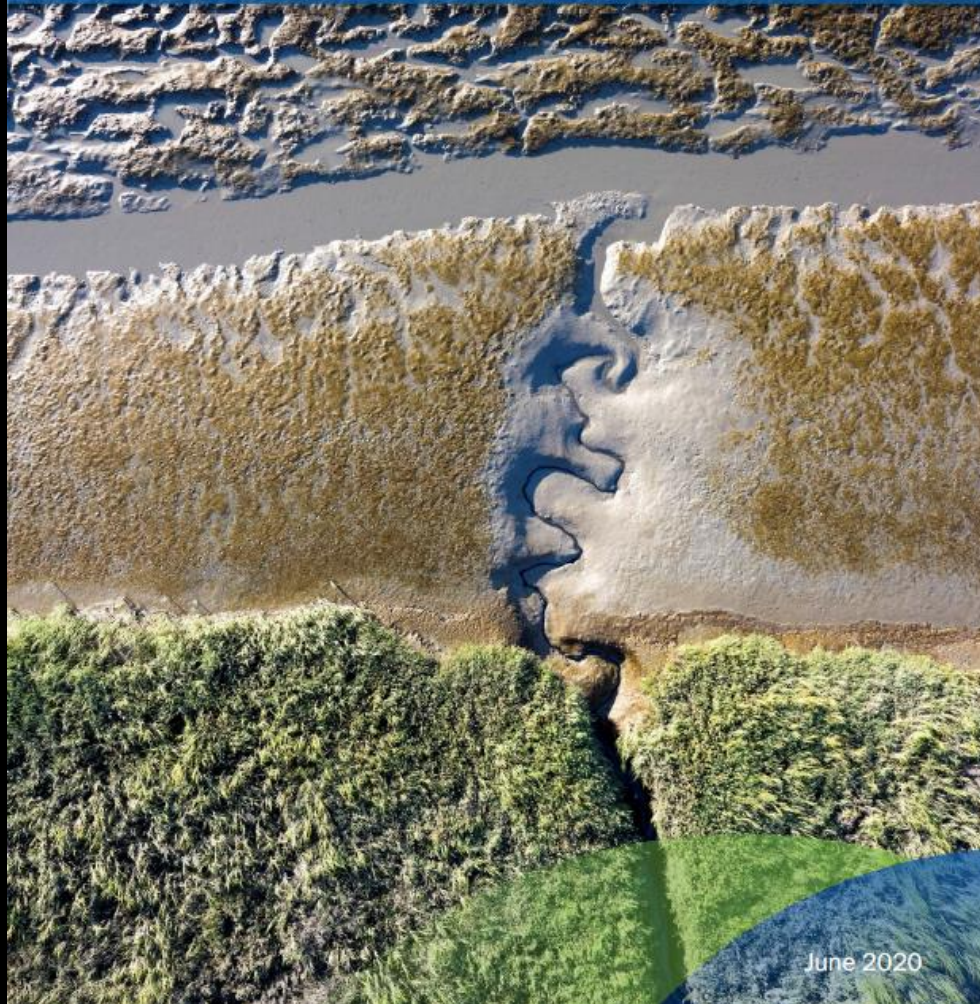




Point Blue
Conservation
Science

SCIENCE PROGRAM FRAMEWORK

South Bay Salt Pond
Restoration Project
Phase 2



June 2020

- Science Framework
- Science Program

Regional Science

Adaptation Atlas

<https://www.sfei.org/documents/adaptationatlas>

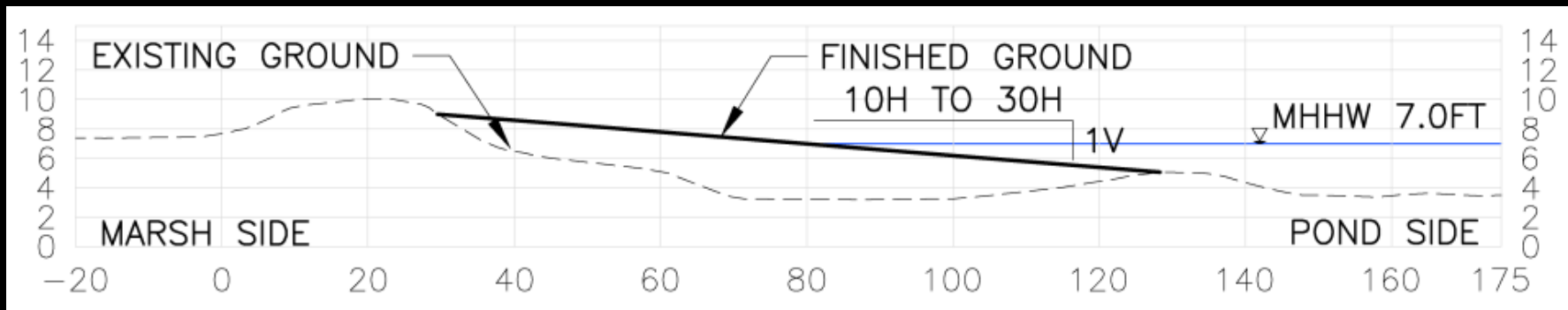
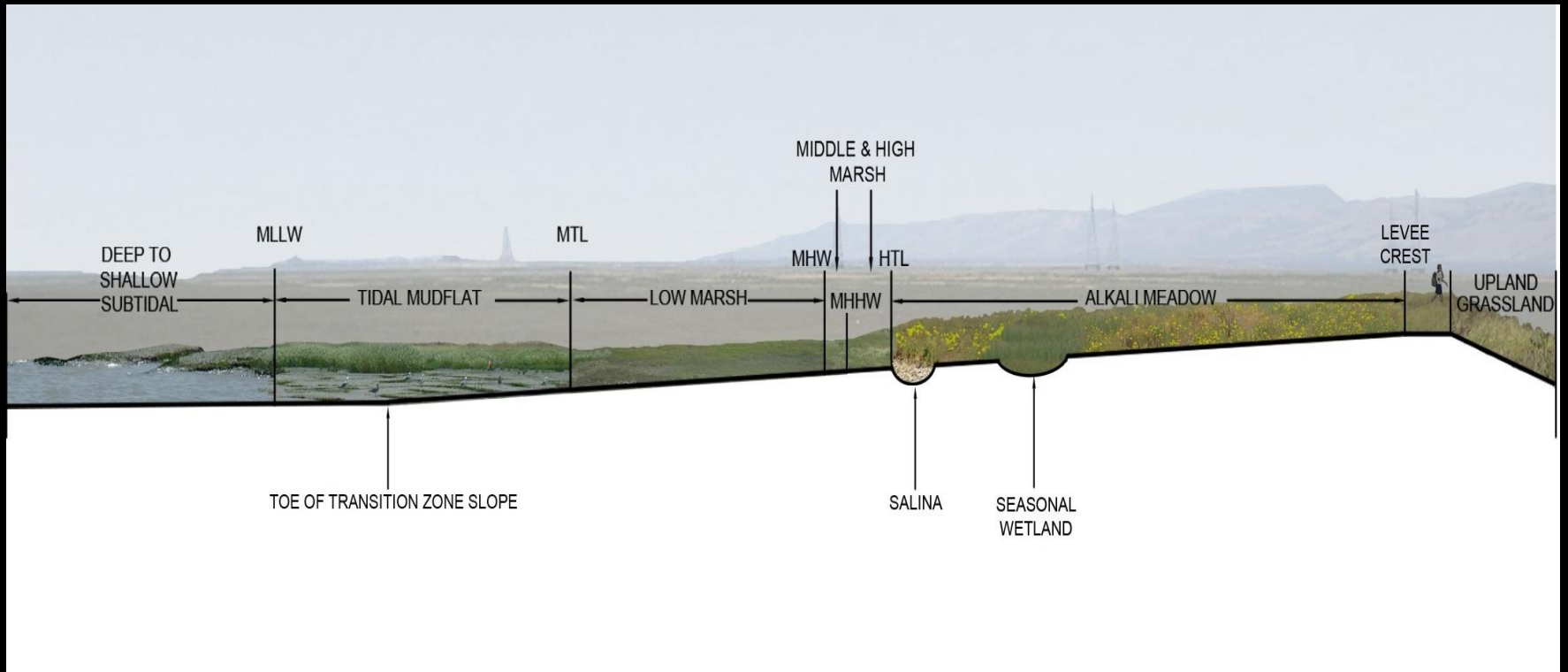
Bay Adapt – focused on regional SLR strategies

<https://www.bayadapt.org/>

Sediment for Survival

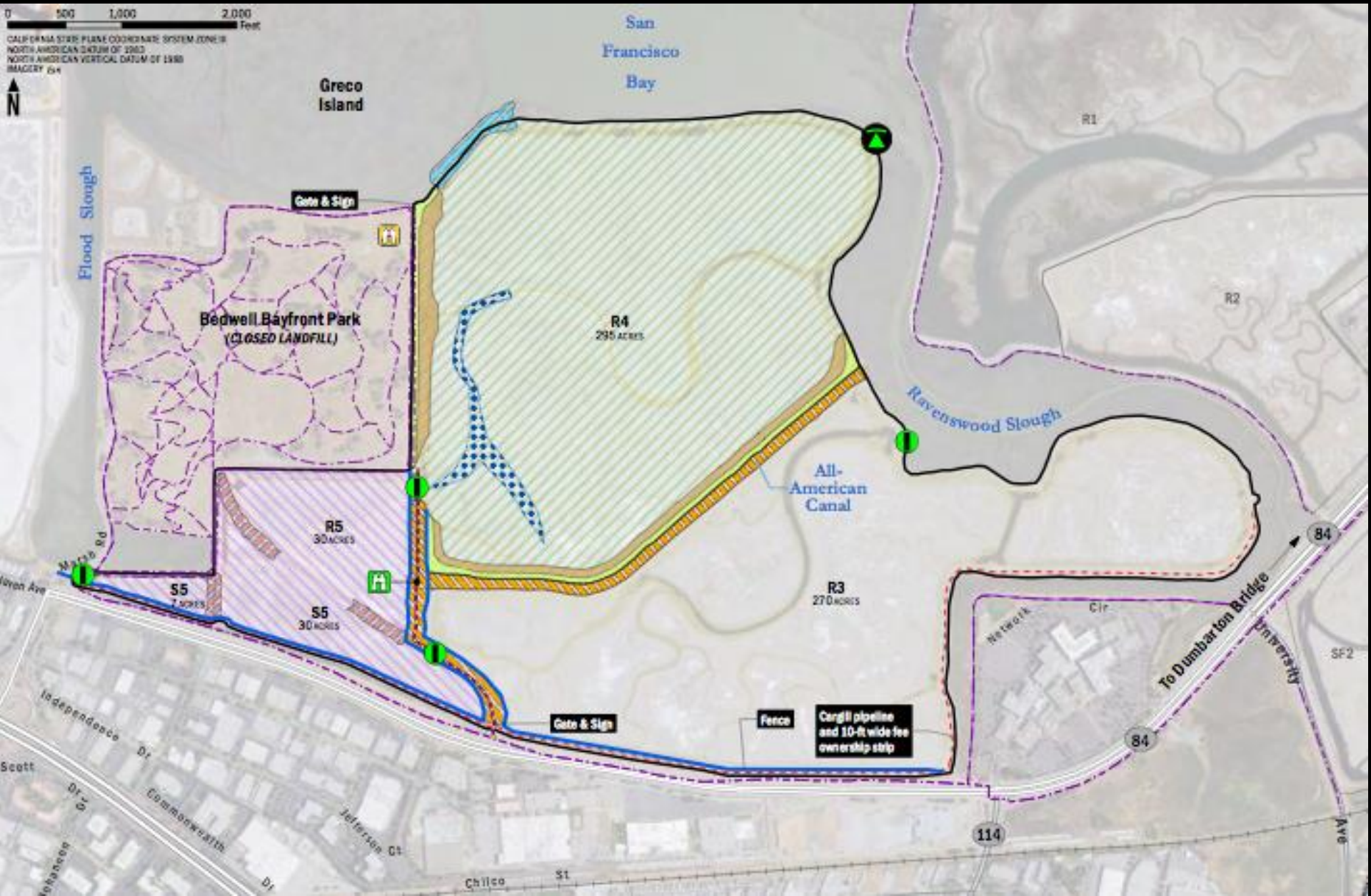
<https://www.sfei.org/documents/sediment-for-survival>

Adaptation



Ravenswood

0 500 1,000 2,000 Feet
CALIFORNIA STATE PLANE COORDINATE SYSTEM ZONE 10
NORTH AMERICAN DATUM OF 1983
NORTH AMERICAN VERTICAL DATUM OF 1988
IMAGERY © 14



Collaboration

- Shoreline Project
- SAFER Bay
- Dumbarton Rail Corridor
- Dumbarton Area SLR Adaptation
- Capitol Corridor JPA
- Sunnyvale Shoreline Adaptation
- Mountain View SLR Adaptation
- Alameda County Flood Control District (CHARG)
- S.F. Bay Conservation and Development Commission (BCDC) Adapting to Rising Tides

Regional Science Collaboration

Bay Regional Monitoring Program
Nutrient Management Strategy
Sediment Workgroup

Wetlands Regional Monitoring Program (WRMP)
Tidal marsh indicators

SFEI/Lead Scientist opportunity

Going Forward

- Adaptive Management Plan
- Respond to changes in the system
- Respond to external changes
- Respond to new understanding
- Regional collaboration

Communicating Science

Presentations

Stakeholder Workshop – Fall 2021

Science Symposium – Spring 2022

Science Webinars - Quarterly

Thank You!

Dave Halsing

dave.halsing@scc.ca.gov

650-814-0588

Donna Ball

donnab@sfei.org

360-460-5227

